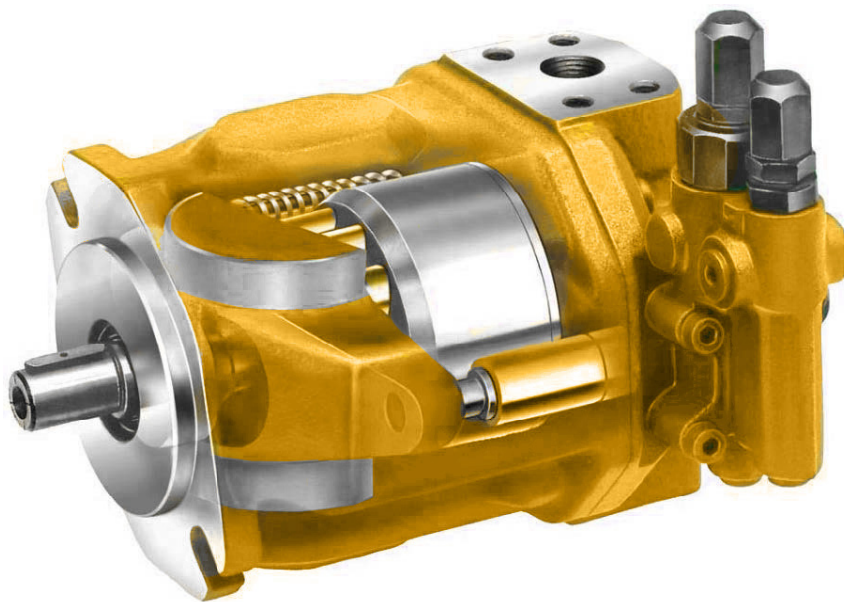




# PISTON PUMPS CATALOG



**INNOVATIVE MOBILE SOLUTIONS**  
**DESIGN ▼ MANUFACTURE ▼ INTEGRATE**

1 877 382-2850 [EAGLE-HYDRAULIC.COM](http://EAGLE-HYDRAULIC.COM)



# INNOVATIVE MOBILE SOLUTIONS

Eagle Hydraulic Inc. is a Canadian based manufacturer of custom and standard hydraulic solutions.

We manufacture hydraulic cylinders, hydraulic power units and pumps as well as engineer and integrate more than 500,000 other hydraulic components such as motors, valves, manifolds, and many more options.

Serving the mobile equipment industry for decades, our products are designed and supported from our head office located in Mirabel, Quebec, Canada to exceed North American standards.

We own and operate two hydraulic cylinder manufacturing facilities located in China. Our manufacturing operations are certified ISO TS16949. We are also a certified OEM production supplier to many large North American based corporations.

Our services include custom components or system design, on-site visits, continuous support, flexible delivery and stocking programs, inventory updates, many warranty options, and responsive service.

We strive to provide you the best experience and deliver high-quality merchandise faster than expected.

Eagle Hydraulic adds value through innovation, quality, respect, commitment, loyalty, and teamwork.



## OUR CAPABILITIES

1

**OEM HYDRAULIC CYLINDERS**

2

**STANDARD HYDRAULIC CYLINDERS**

3

**HYDRAULIC POWER UNITS**

- AC
- DC

4

**HYDRAULIC COMPONENTS**

- Pumps
- Motors
- Valves
- Tanks
- Toolboxes
- Manifolds
- Filters
- Remotes
- Wireless controllers
- ...

5

**SYSTEM INTEGRATION**

6

**NEW: NOVAPEAK**

[illegible]

EPP is a variable pump with axial piston swashplate design for open circuits. The flow is proportional to the drive speed and the displacement, the flow can be modified with an adjustment of the swashplate angle.

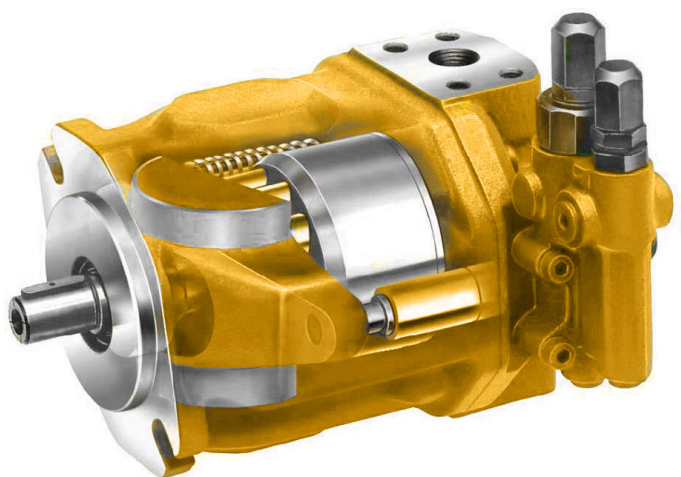
EPP

## FEATURES

- ▶ Excellent suction characteristics.
- ▶ Axial and radial load capacity of drive shaft.
- ▶ Short control time.
- ▶ The through drive is suitable for adding gear pumps and axial piston pumps up to the same size.
- ▶ Low noise level, long life expectancy.
- ▶ Favorable power/weight ratio.
- ▶ Versatile controller range.
- ▶ 100% factory tested.

## APPLICATIONS

- ▶ Metallurgical and mining machinery.
- ▶ Engineering machinery and industry equipment.
- ▶ Naval and civil aviation ground equipment.
- ▶ Petroleum and petrochemical machinery.
- ▶ Construction and handling machinery.



EPP-A10VSO

## GUARANTEE

Eagle Hydraulic provides a **three years warranty** if used in accordance with the approved application and operating conditions. Pumps should be mounted on a rigid base in line with the drive. Before starting the pump, check the pump unit has been assembled correctly for the required direction flow and shaft rotation.

## EPP ORDER INFORMATION



	1	2	3	4	5	6	7	8	9	10	11	12
EPP	-		O			31		V				N00

	1	2	3	4	5	6	7
CODE	Oil types	Axial piston unit	Operation mode	Displacement / size	Control device	Series	Direction of rotation
EPP	A Standard version	A10VS 4000 PSI swashplate design	O Pump, open circuit	18 cm³/r	DG Two-point control, directly operated	31 Series 3, Index 1	R Clockwise
	E HFA, HFB, HFC hydraulic fluid	AA10VS 5100 PSI swashplate design		28 cm³/r	DR Pressure control		L Counter clockwise
	H High-speed version			45 cm³/r	DFR Pressure control, with flow control X-T open		
				71 cm³/r	DFR1 Pressure control, with flow control X-T closed		
				100 cm³/r	DFF1 Pressure control with swivel-angle control, electric		
				140 cm³/r	DRG Hydraulic pressure control with pressure cut-off (remotely operated)		
					ED71 Electrical pressure control. 12V Negative characteristic		
					ED72 Electrical pressure control. 24V Negative characteristic		
					ER71 Electrical pressure control. 12V Positive characteristic		
					ER72 Electrical pressure control. 24V Positive characteristic		
					DFLR Pressure, flow and power control		

8	9	10	11
Seals	Drive shaft	Mounting flange	Service line port
V FKM (fluor-caoutchouc)	S Splined shaft ANSI B92.1a (standard)	C ISO 3019-1, 2 holes	62 SAE flange ports on opposite side, UNC fastening thread
	R Splined shaft ANSI B92.1a, similar to standard shaft but with higher input torque	D ISO 3019-1, 4 holes	92 Option for 71 displacement
	U Splined shaft ANSI B92.1a, reduced diameter, not for through drive		
	K Parallel keyed shaft ISO 3019-1 not for through drive		

### NOTES:

- From the order information table, please choose the right code for oil type, swashplate design, displacement, control device, direction of rotation, drive shaft, mounting flange and service line port. If the specification is not in the table or you have specific requirements, please contact us.



All numbers given are nominal values and should be used for reference only.

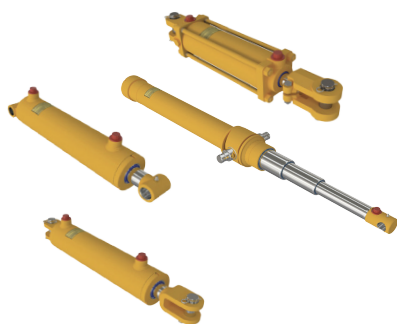
[WWW.EAGLE-HYDRAULIC.COM](http://WWW.EAGLE-HYDRAULIC.COM)



# EAGLE IS NOT ONLY A HYDRAULIC CYLINDER MANUFACTURER

We can provide more than 500,000 unique hydraulic solutions.  
Tell us about your needs!

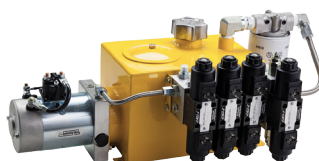
## STANDARD AND CUSTOM HYDRAULIC CYLINDERS



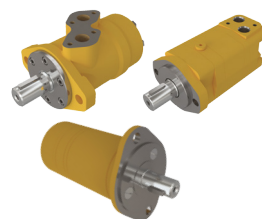
## POWER UNITS

- AC

- DC



## HYDRAULIC MOTORS



## INDUSTRIES WE SERVE:

AERIAL TRUCK • AGRICULTURE • MATERIAL HANDLING • TRUCK & TRAILER  
AUTO LIFT • CONSTRUCTION • SNOW EQUIPMENT • WASTE & REFUSE

A Canadian Owned & Operated Company 



12055 Arthur-Sicard, Mirabel, Québec, Canada, J7J 0E9

Phone: 1 450 433-2800 / 1 877 382-2850

Fax: 1 450 433-3004 / 1 877 382-2853

[eagle-hydraulic.com](http://eagle-hydraulic.com)